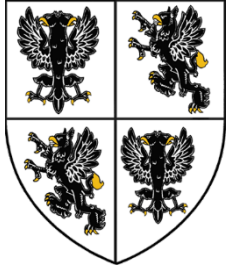


- Teacher
- Sustainability Consultant
- Town Planner
- Geophysicist
- International Aid/Development Worker
- Climatologist

- Further Education:
- T Levels
 - A Levels
 - BTEC
 - Apprenticeships
- Higher Education:
- Physical and Human Geography Degrees

Stanley High School's Geography



LEARNING JOURNEY

Skills to Progress: Describe, Explain, Evaluate, Justify

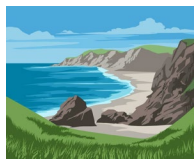
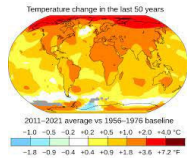
In Geography we: investigate, analyse, interpret, explain.

Careers

Post-16

Summer Term : Revision & Final GCSE Examinations

Unit 6: Geographical Applications (Fieldwork, Issue Evaluation)

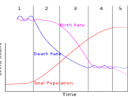


Unit 1: Natural Hazards - Tectonics, Weather, Climate Change?

Unit 2: Resources and energy

Unit 3: UK Physical Landscapes – Coasts and Rivers

YEAR 11



Unit 3: Changing Economic World – Development Gap, Nigeria, UK Economy

Unit 2: The Living World – Ecosystems, Rainforests, Hot deserts.?

Unit 1: Urban Issues and Challenges

YEAR 10

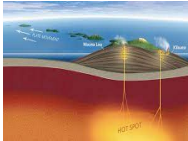
AQA Geography 8035
Paper 1: Living with the physical environment
Paper 2: Challenges in the human environment
Paper 3: Geographical applications



Unit 1: How are populations changing?



Unit 2: Why do people move and what impact does this have?



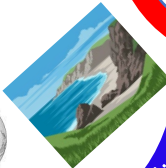
Unit 3: Why do we need to understand of tectonic hazards?



Unit 4: Are natural disasters natural?



Unit 5: Why is the Middle East an important region?



Unit 6: How can water shape our planet?

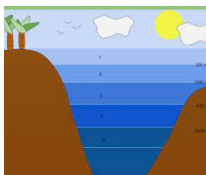
YEAR 9



Unit 6: How is Asia being transformed?



Unit 5: Why do we need to understand how the Earth works?



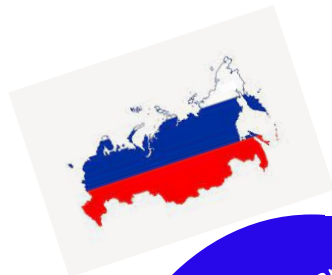
Unit 4: What and where are oceans?



Unit 3: What are the challenges and opportunities facing Africa?)



Unit 2: What is the future of the planet?



Unit 3: Is the Geography of Russia a curse or a benefit?



Unit 4: What is an economy?



Unit 5: How does ice change the world?



Unit 6: How do we use our planet as a natural resource?

YEAR 8



Unit 1: What is weather and climate?

YEAR 7

Unit 1: What is Geography?

Students will be baselined to assess their prior knowledge.

KS2

Unit 2: How do we use maps?



Summative teacher assessment will take place at the end of each unit.

Key concepts: Map skills; Sustainability; Urban theory; Processes; Human, physical and environmental Geography