

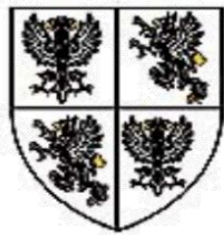
Stanley High School

2020-2021

Re-opening & Curriculum Recovery

Phase 3

Aspire – Challenge – Excel



It is the ambition of Stanley High School to re-open to all students from 2nd September 2020. Leaders will continue to follow the latest guidance from the Department of Education, Public Health and the Southport Learning Trust.

Rationale

In order to achieve:

- Limited year group cross-contamination
- A broad and balanced curriculum offer
- A clear method of tracking student and staff contact
- Robust hand and respiratory hygiene
- Enhanced cleaning arrangements

We have structured phase 3 around the following principles.

- ✓ Clear weekly structure
- ✓ Limited movement around the building
- ✓ Staggered start times for KS3 & KS4
- ✓ Daily Learning zone isolation features (entry/exit/space/toilets)
- ✓ Clear staffing allocation
- ✓ Consideration of distance learning requirements
- ✓ Enhanced cleaning provision
- ✓ Contingency plans
- ✓ Maintaining our Stanley High School great features and high expectations

Curriculum Proposals

The school will offer a full-time, broad curriculum to all students and will continue to use a combination of blended learning in the Autumn term to enhance our learning provision beyond the normal school hours. Students, in all year groups, will have full access to the breadth of our ambitious curriculum and this will be supplemented by independent, remote learning through Microsoft Teams, to enable students to access curriculum recovery learning. Extra-curricular opportunities and peer to peer collaboration will also be supported through the continued use of Microsoft Teams. The Phase 3 curriculum offer will build on the strengths and curriculum offered during Phase 2.

Half Term 1 – 2020-2021

Each year group to have a 'Daily Learning Zone' to minimise cleaning and contact with other students and staff. Year groups will remain in these daily bubbles. We will operate 5 Daily learning Zones. The school will operate a hybrid timetable until **23rd October**, in the first instance. This curriculum cycle will be amended to allow this, and a weekly timetable cycle will be introduced. This will simplify movement and student understanding of the hybrid timetable. There will be 6 x 50 minute lessons each day. Staggered school days will be introduced for KS3 and KS4.



Daily Learning Zones

Zone 1 - Aspire
English, Music,
Drama

**The Daily
Learning
Zones**

Zone 2 - Challenge
Science, Geography

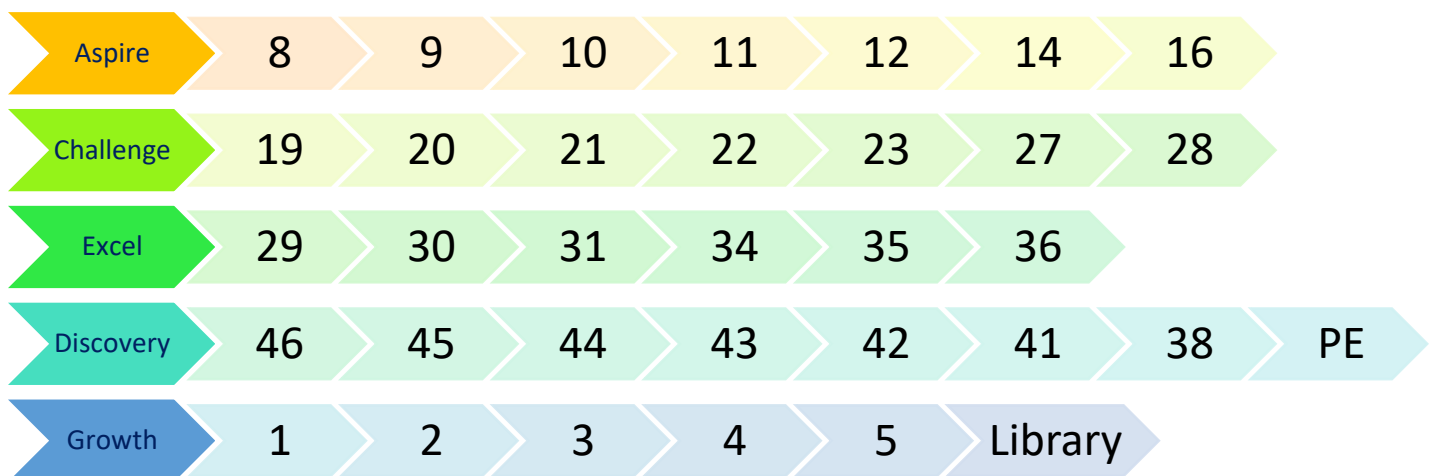
Zone 3 - Excel
History, MFL, RE

Zone 4 - Discovery
Technology,
Computing, PE

Zone 5 - Growth
Mathematics,
Personal
Development

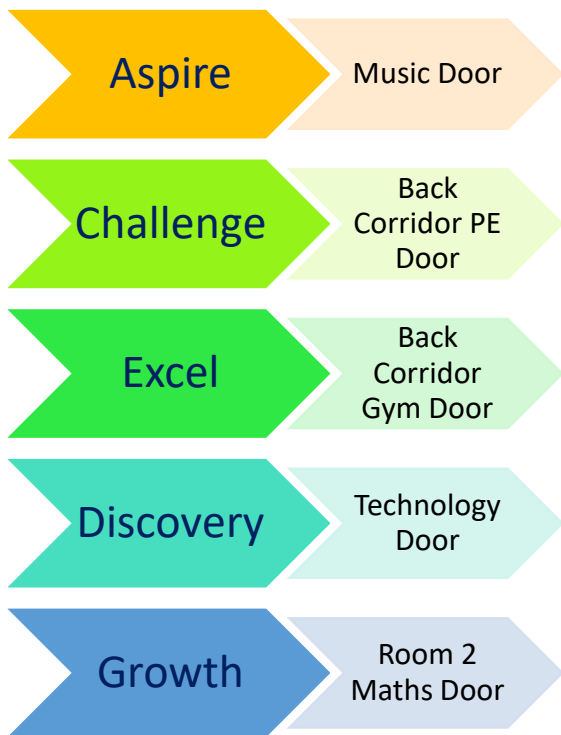


Daily Learning Zone room allocation

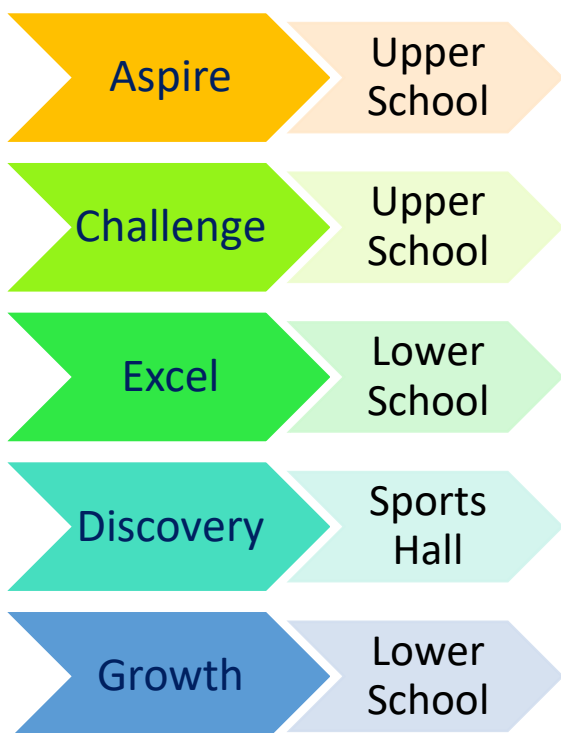


Daily Learning Zones Entry / Exit points

To further mitigate against contact between Zones, each Zone will have a staffed (morning, break, lunch, day end) Zone entrance and exit.



Daily Learning Zone Toilets

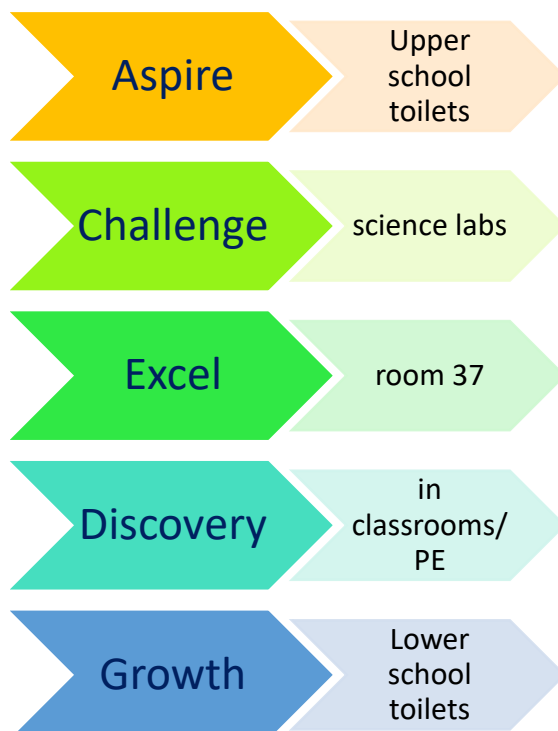


Daily Learning Zone Lunch and Breaktime areas



All students will go outside for break and lunch times unless the weather is extremely poor.

Daily Learning zone morning hand wash area

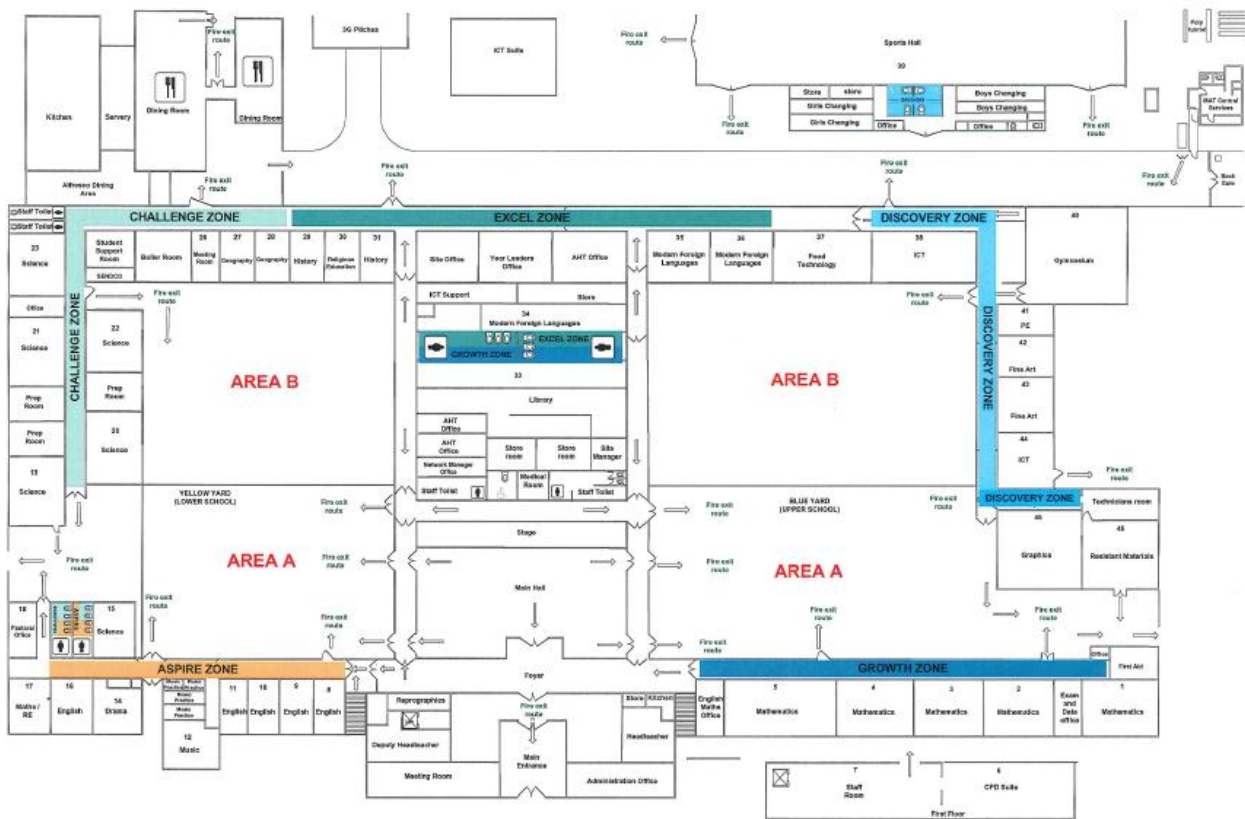


All students to wash their hands when they get into the building and at frequent points through the day.

We also have sanitiser in every classroom

School Zone Map

Stanley High School



Physical barriers and posters/signs will determine areas. Zones in school will be made very clear.

Revised Student School Day

Year 10 and 11 (KS4)	
8:40 – 9:00	Registration
9:00- 9:50	Lesson 1
9:50 – 10:40	Lesson 2
10:40 – 11:00	Break
11:00 – 11:45	Lesson 3
11:45 – 12:30	Lesson 4
12:30 – 1:00	Lunch
1:00 – 1:50	Lesson 5
1:50 – 2:40	Lesson 6

Year 7, 8 and 9 (KS3)	
9:00 – 9:20	Registration
9:20 – 10:10	Lesson 1
10:10 – 11:00	Lesson 2
11:00 – 11:20	Break
11:20 – 12:10	Lesson 3
12:10 – 1:00	Lesson 4
1:00 – 1:30	Lunch
1:30 – 2:20	Lesson 5
2:20 – 3:10	Lesson 6

3:30 – 5:00

Distance Learning

3:30 – 5:00

Distance Learning

Revised Student School Day Cont.

	Monday	Tuesday	Wednesday	Thursday	Friday
Year 7 9am – 3:10pm	Discovery* (Technology Door)	Aspire (Music Door)	Growth (Room 2 Maths Door)	Excel (Back corridor gym)	Challenge (Back corridor PE)
Year 8 9am – 3:10pm	Excel (Back corridor gym)	Discovery* (Technology Door)	Challenge (Back corridor PE)	Aspire (Music Door)	Growth (Room 2 Maths Door)
Year 9 9am – 3:10pm	Growth (Room 2 Maths Door)	Challenge (Back corridor PE)	Excel (Back corridor gym)	Discovery* (Technology Door)	Aspire (Music Door)
Year 10 8:40am – 2:40pm	Challenge (Back corridor PE)	Excel (Back corridor gym)	Aspire (Music Door)	Growth (Room 2 Maths Door)	Discovery* (Technology Door)
Year 11 8:40am – 2:40pm	Aspire (Music Door)	Growth (Room 2 Maths Door)	Discovery* (Technology Door)	Challenge (Back corridor PE)	Excel (Back corridor gym)

- Attend school in your PE kit when you are in the Discovery Daily Learning Zone

Distance Learning Curriculum

A distance learning curriculum will be delivered using Microsoft Teams. Distance learning incorporates continued learning from an in-school lesson, enrichment opportunities, extended reading, quizzes and assessment tasks, practical challenges, revision lessons, flipped learning opportunities, question and answer discussions. Intervention opportunities may also take place during this time.

In addition to this some of our students may have extenuating circumstances surrounding continual attendance at school – in this case we will endeavour to provide access to a continued learning provision from home.

	Monday	Tuesday	Wednesday	Thursday	Friday
7	Technology RE	English	Mathematics PSHCE	History MFL	Science Geography
8	History MFL	Technology RE	Science Geography	English	Maths
9	Maths/PSHCE	Science Geography	History MFL	Technology RE	English
10	Science	Option A Option B	English	Maths RE	Option C Option D
11	English	Maths RE	Option A Option B	Science	Option C Option D

Extra-curricular

Extra-curricular groups can run alongside the school timetable and distance learning timetable. Zone areas may choose to run extra-curricular opportunities during breaks and lunch with the year group in their zone that day. Alternatively, extra-curricular opportunities can still run using Teams.

Year face to face mentoring

Over Phase 1 and 2 Teaching staff and Year 11 have built some strong relationships. Our Year 11 students will need close contact to support their continued learning. We will trial the following: all staff involved in the Year 11 face to face mentoring to continue contacting your allocated students on a fortnightly basis. This can be done via Teams on a Thursday during distance learning time. Staff may choose to catch up with their students whilst they are in their daily learning zones or fit these conversations at another convenient point. This must not take place during a school day if it encourages zones mixing.

Practical subjects and equipment

For individual and very frequently used equipment, such as pencils and pens, it is recommended that staff and students have their own items that are not shared. Classroom based resources, such as books and games, can be used and shared within the daily bubble; these should be cleaned regularly, along with all frequently touched surfaces. Resources that are shared between classes or bubbles, such as sports, art and science equipment should be cleaned frequently and meticulously and always between bubbles or rotated to allow them to be left unused and out of reach for a period of 48 hours (72 hours for plastics) between use by different bubbles.

Schools have the flexibility to decide how physical education, sport and physical activity will be provided whilst following the measures in their system of controls. Students should be kept in consistent groups, sports equipment thoroughly cleaned between each use by different individual groups, and contact sports avoided.

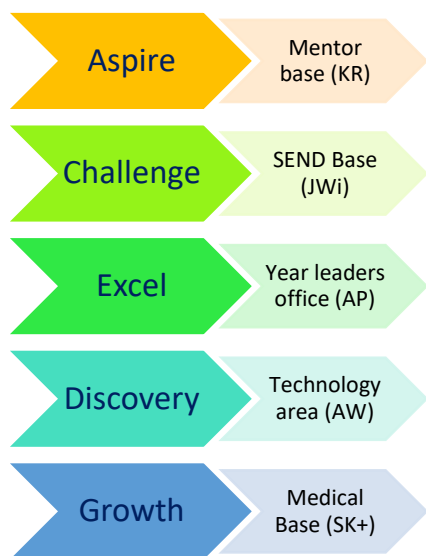
Outdoor sports should be prioritised where possible, and large indoor spaces used where it is not, maximising distancing between students and paying scrupulous attention to cleaning and hygiene. This is particularly important in a sports setting because of the way in which people breathe during exercise.

Fire Alarm and Emergency procedures

It is unlikely that we can switch back into a form system that we are not using. Part of morning registration will contain a daily fire procedure for the area. The office will print off the daily register lists for students as would happen on a normal school day.

A fire drill and in-school lockdown walk/talk through will take place on 1st September for staff.

Pastoral bases



Lunchtime Arrangements

Students will pre-order lunches from a limited menu, for the school week. Lunches will be delivered to the zone areas. We must encourage as many students as possible to bring their own packed lunch.

Wet weather zone breaks and lunchrooms

Zone staff may choose to let students use all or some zone classrooms during lunch and the corridor. Students must remain in Zone, any out of Zone toilet visits monitored. Where possible additional rooms can be used:



Where possible ALL students will be outside

Student Uniform

It is for the Governing Body of a school to make decisions regarding school uniform.

At Stanley High School we will encourage all students to return to the usual uniform policy in the Autumn term. Uniform plays a valuable role in contributing to the ethos of a school and setting an appropriate tone.

Uniforms do not need to be cleaned any more often than usual, nor do they need to be cleaned using methods which are different from normal.

Students not in full uniform must have a note from home explaining why. Where financial concerns prevent full uniform, the school will support, where possible, by using the school hardship fund.

Students will be outside during breaks and lunchtimes and should have an appropriate coat for the weather. Coats are to be removed in classrooms and put on the backs of chairs or in the student's bag.

When a year group is in the **Discovery** daily learning zone they must attend school in their PE kit. We are currently unable to offer student changing facilities. A spare change of sports kit or sports clothing must be brought into school for emergencies.

Local Lockdown arrangements

In the case of a local or school lockdown, we will continue to provide daily learning provision via Teams.

Schools must take swift action when they become aware that someone who has attended has tested positive for coronavirus (COVID-19). Schools should contact the local health protection team. This team will also contact schools directly if they become aware that someone who has tested positive for coronavirus (COVID-19) attended the school – as identified by NHS Test and Trace.

The health protection team will carry out a rapid risk assessment to confirm who has been in close contact with the person during the period that they were infectious, and ensure they are asked to self-isolate.

The health protection team will work with schools in this situation to guide them through the actions they need to take. Based on the advice from the health protection team, schools must send home those people who have been in close contact with the person who has tested positive, advising them to self-isolate for 14 days since they were last in close contact with that person when they were infectious. Close contact means:

- direct close contacts - face to face contact with an infected individual for any length of time, within 1 metre, including being coughed on, a face to face conversation, or unprotected physical contact (skin-to-skin)
- proximity contacts - extended close contact (within 1 to 2 metres for more than 15 minutes) with an infected individual

- travelling in a small vehicle, like a car, with an infected person

The health protection team will provide definitive advice on who must be sent home. To support them in doing so, we recommend schools keep a record of students and staff in each group, and any close contact that takes places between children and staff in different groups (see [section 5 of system of control](#) for more on grouping students). This should be a proportionate recording process. Schools do not need to ask students to record everyone they have spent time with each day or ask staff to keep definitive records in a way that is overly burdensome.

A template letter will be provided to schools, on the advice of the health protection team, to send to parents and staff if needed. Schools must not share the names or details of people with coronavirus (COVID-19) unless essential to protect others.